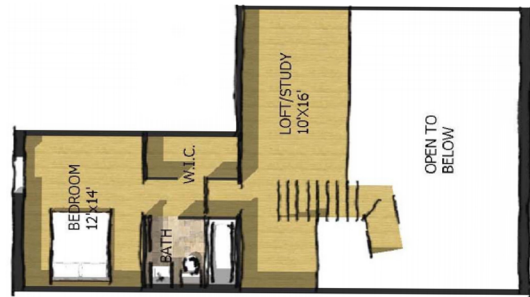




**Shaffran**  
Companies



1st Level



2nd Level

**Suzuki Project**  
**1012 Pontiac Trail**  
**Ann Arbor, MI 48104**

Unit: 1012-9 Sq Ft: 1623 Bed: 2 Bath: 2

**Amenities:**

On-site parking; exposed block walls; exposed duct work; high ceilings; wood laminate floors; large windows; tile floor baths; maple cabinets; cable-ready; blinds; dishwasher; central air; refrigerator; electric stove; garbage disposal; microwave; in-unit laundry rooms with stackable washer/dryer.

**Features:**

2 bedrooms; 2 baths; on 2 levels; middle unit; open floor plan on main level; expansive upper level loft area in front of upper bedroom.

Contact (734) 665-1200 x4