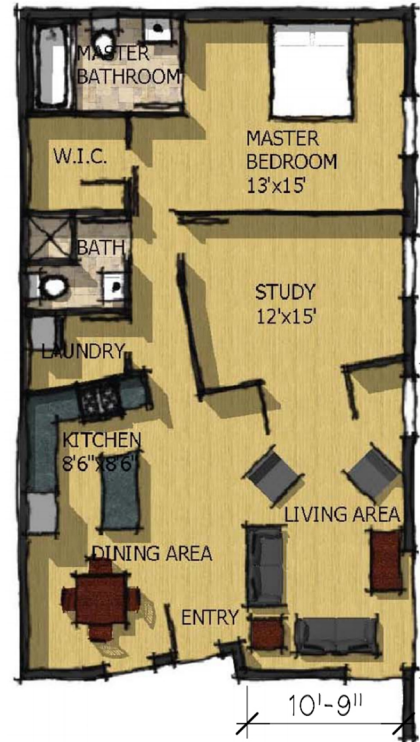




**Shaffran**  
Companies



**Suzuki Project**  
**1012 Pontiac Trail**  
**Ann Arbor, MI 48104**

**Unit: 1012-2 Sq Ft: 1201 Bed: 1 Bath: 2**

**Amenities:**

**On-site parking; exposed Amenities:**

**On-site parking; exposed block walls; exposed duct work; high ceilings; wood laminate floors; large windows; tile floor baths; maple cabinets; cable-ready; blinds; dishwasher; central air; refrigerator; electric stove; garbage disposal; microwave; in-unit laundry rooms with stackable washer/dryer.**

**Features:**

**1 bedroom; 2 baths; large study; on 1 level; open floor plan; patio.**

**Contact (734) 665-1200 x4**