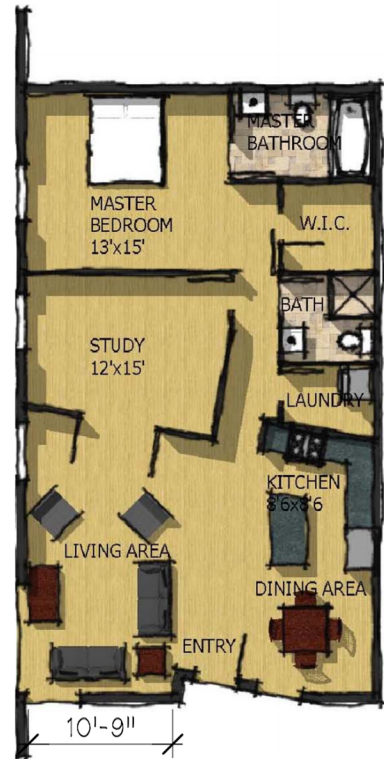




Shaffran
Companies



**Suzuki Project
1012 Pontiac Trail
Ann Arbor, MI 48104**

Unit: 1012-1 Sq Ft: 1201 Bed: 1 Bath: 2

Amenities:

On-site parking; exposed block walls; exposed duct work; high ceilings; wood laminate floors; large windows; tile floor baths; maple cabinets; cable-ready; blinds; dishwasher; central air; refrigerator; electric stove; garbage disposal; microwave; in-unit laundry rooms with stackable washer/dryer.

Features:

1 bedroom; 2 baths; large study; on 1 level; open floor plan; patio.

Contact (734) 665-1200 x4